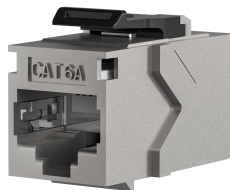
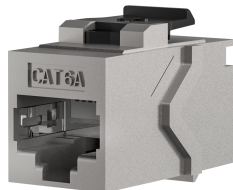
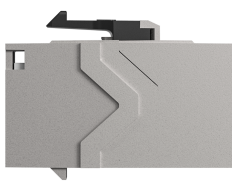
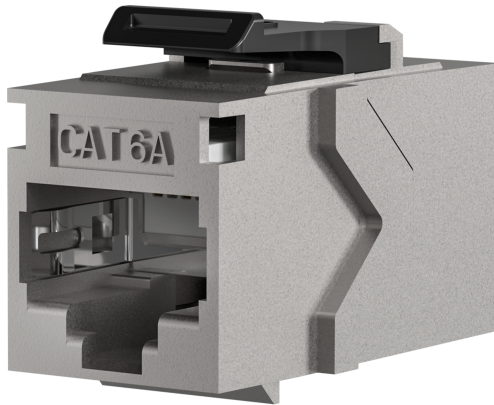


Keystone Snap-In Adapter RJ45 STP, Cat.6A



General data

Snap-In mounting (Keystone)
 Cat.6A/Class EA
 Connecting adapter for patch cables
 Both sides with shielded RJ45 jack assembled for connecting of RJ45 Patch cable
 Allocation: 1:1
 Metal housing
 Snap-in spring: plastic

Technical properties

Category	6A (TIA)
Construction type	straight
Mating cycles	≥ 750
Model	jack/jack
Temperature Range (Operation)	0 - 70 °C
Type of connector	2x RJ45
Type of fastening	Engage (snap)

Drawings

