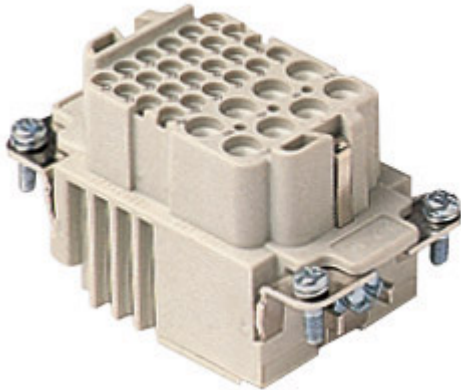


Part number

CXF 8/24



Brief description:

female insert, 8 poles + PE, crimp connections, 16A 400V, (24 poles (10A max - 250V)), 4kV, 2, for female contacts 16A and 10A, size "57.27", CLASS insert series

Product description

Model	female insert
Version	crimp connections
Series	CX
Product type	for female contacts 16A and 10A
Family	CLASS inserts
Size	size "57.27"
N. of poles	8 poles +
Auxiliary poles	24 poles (10A max - 250V)

Technical data

Current	16 A (A.C. and D.C.)
Voltage	400 V
Rated impulse withstand voltage	4 kV
Pollution degree	2
Operating temperature range (min, max)	-40°C ... +125°C
Mating cycles	≥ 500
IP degree of protection	IP20 without enclosure, IP65/IP66/IP68/IP69 with enclosure

Further technical details

Characteristics according to EN 61984	16A 230/400V 4kV 3 (aux: 10A 160V 2.5kV 3); 16A 400V 4kV 2 (aux: 10A 250V 4kV 2)
Insulation resistance	≥ 10 GΩ
Rated voltage according to UL/CSA	600V
UL 94 flammability rating	V-0
Weight	57,00 g

Approvals / Standards

Reference standard	EN 61984:2009-06
Quality mark	, EAC
Conformity	CQC, CE

General ordering information

EAN13 code	8015747042437
Tariff number	85369095
Country of origin	Made in EU (IT)
ETIM classification	EC000438

Packaging Information

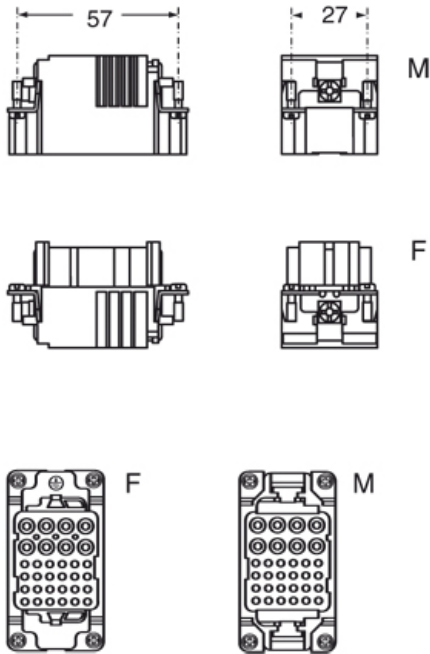
Sub-packaging length	67,00 mm
Sub-packaging height	36,00 mm
Sub-packaging width	180,00 mm
Sub-packaging weight	0,29 kg
Sub-packaging volume	0,43 dm ³
Sub-packaging description	Carton box
Sub-packaging quantity	5 Pcs
Sub-packaging EAN barcode	8015747042444

Part number

CXF 8/24



Catalogue drawings



Catalogue drawings

diagram CX 8/24 power poles

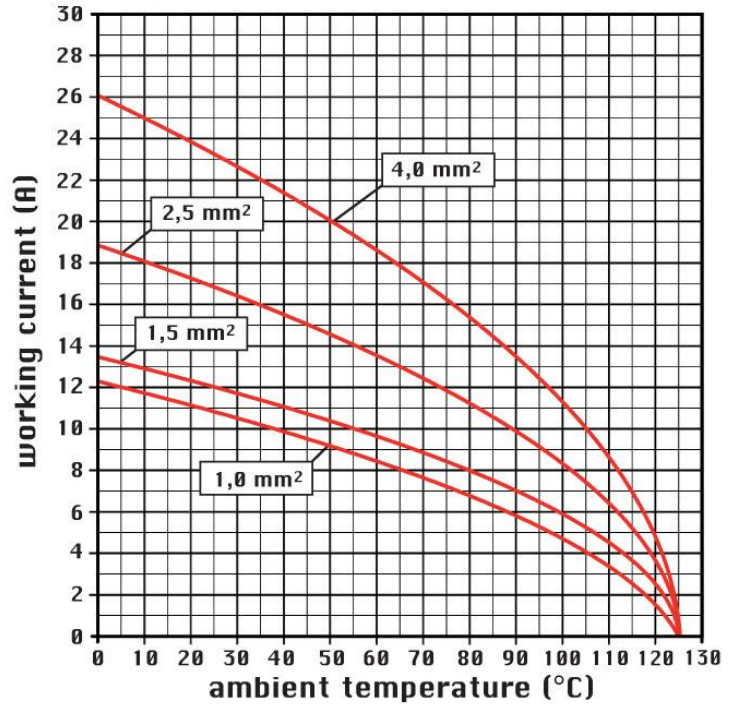
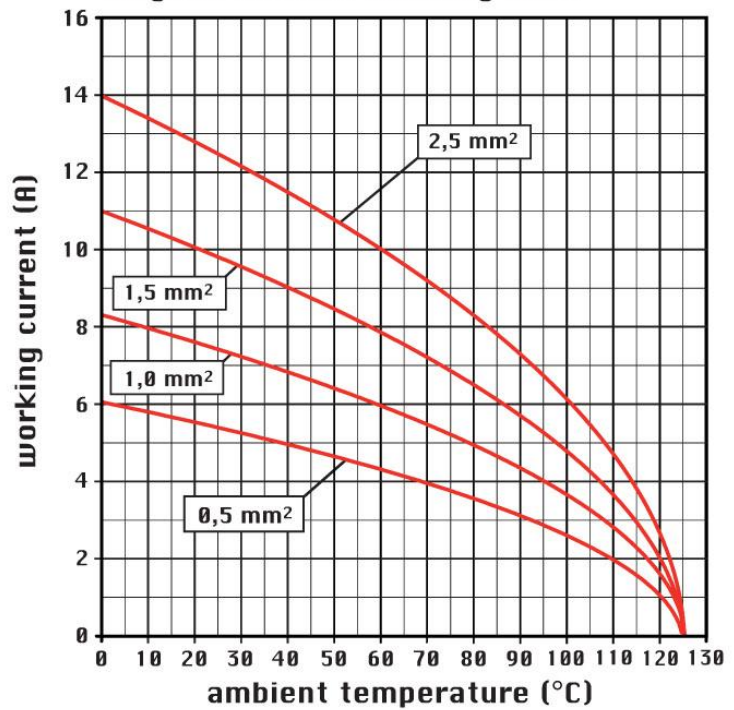


diagram CX 8/24 auxiliary poles



Notes

CXF/M 8/24 inserts

- characteristics according to EN 61984:

16A 230/400V 4kV 3

16A 400V 4kV 2

10A 160V 2,5kV 3

10A 250V 4kV 2

- rated voltage according to UL/CSA: 600V

- insulation resistance: > 10 GOhm

- ambient temperature limit: -40 °C ... +125 °C

- are made of self-extinguishing thermoplastic resin UL 94 V0

- mechanical life: > 500 cycles

- contact resistance: < 1 mOhm (8 poles) < 3 mOhm (24 poles)

- PCBs interface, see article CIF 2.4 (10A contacts)

- enclosures: size 57.27:

C-TYPE IP65/IP66

C7 IP67 stainless steel lever

V-TYPE IP65/IP66 stainless steel lever

T-TYPE IP65 insulating

JEI zinc-plated steel lever

BIG hoods

aggressive environments

EMC

central lever

IP68

- panel supports: COB
