

Change new drawing frame in Blue Color since 2009/07/01.
to comply with Company CIS Policy

Revisions

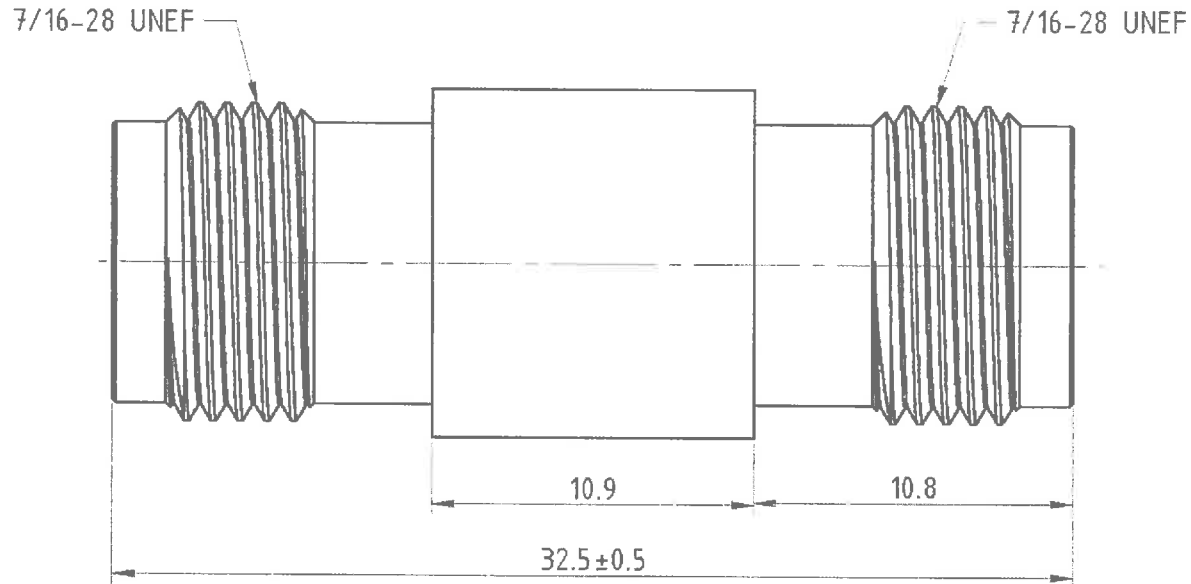
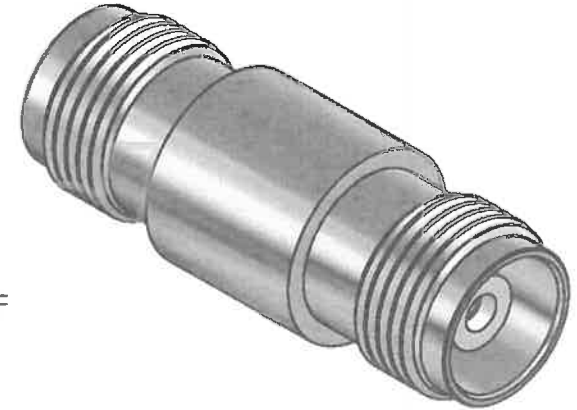
"Note: Revisions B; B-1; B-2..... On Behalf of Official Drawing.
Revisions 1; 2; 3; 4..... On Behalf of Experiment's Drawing."

| ISS | Symbol | Explanation | Date |
|-----|--------|--------------------------|------------|
| B | | Formal Drawing Released. | 2017/08/15 |
| | | | |
| | | | |

Notes :

1. Any Electrical, Mechanical or Environmental Test Per MIL-PRF-39012F Should be Spotlighted, as We May Not Have All Testing Equipment to Cover All of It.
2. All Metal Materials Are in Compliance with RoHS 2 Directive 2011/65/EU Annex III Section 6 Paragraph.

Outline Drawing



Finish (Unit of Plating Thickness Is in Micro Inch(μ))

1. Nickel Plating Thk. : 50 μ" min. (Under Plating)
2. Gold Plating Thk. : 2 μ" max. (Over Finish 1)

| | | | | | |
|------|---------------|----------|----------------|-------------|-----|
| 3 | Inner Contact | Brass | Finish 1/2 (P) | 1 | |
| 2 | Insulator | Delrin | None | 1 | |
| 1 | Body | Brass | Finish 1 | 1 | |
| ITEM | Description | Material | Finish | Part Number | QTY |

*RoHS and REACH are fully complied to create a greener planet for future generations.

| Scale | Abbr | Date | Rev | | JWG P/O |
|-------------|-----------|-----------|-----|--|-----------------------------------|
| NTS | ST | 2017/8/15 | B | | Customer P/N |
| Tolerances | | | | All Dimensions in mm(Inch) (Unless Otherwise Specified) | Title TNC Jack to Jack Adapter |
| X ±0.2 | | | | | |
| XX ±0.1 | | | | | |
| XXX ±0.05 | | | | | |
| Angular ±1° | | | | | |
| Drawn | Checked | Approved | | | |
| Mark | Mark | H. Sun | | | |
| 2017/8/15 | 2017/8/15 | 2017/8/15 | | | |

