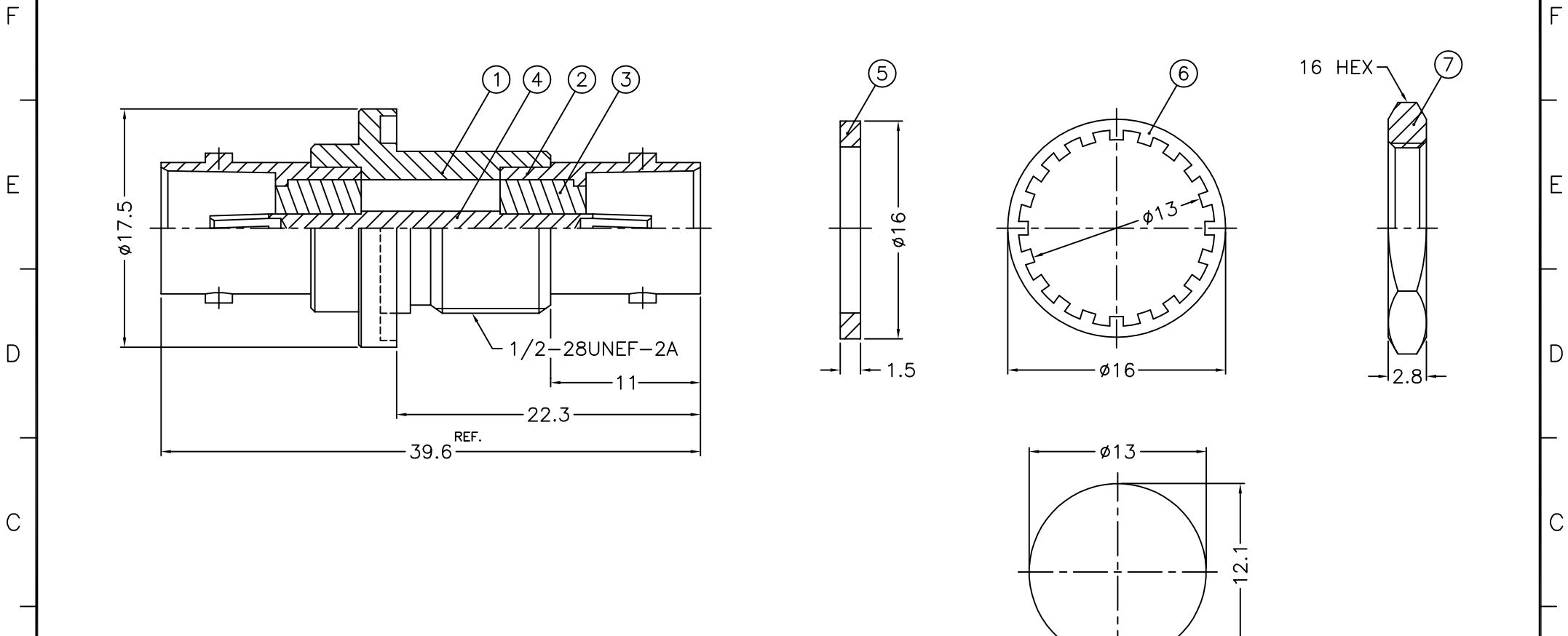


1 2 3 4 5 6 7 8

REVISIONS		
ISS	ZONE	DESCRIPTION\PER REQUEST\DATE



NOTES: FINISH (PLATING THICKNESS IN MICRO-INCHES)
 1. BRASS
 2. NICKEL PL. 100 MIN. THICK OVER COPPER PL. 50 MIN. THICK
 3. PHOSPHOR BRONZE
 4. GOLD PL. 3 MIN. THICK OVER NICKEL PL. 50 MIN. THICK OVER COPPER PL. 50 MIN. THICK
 5. TEFLON

1. MAX. PANEL THICKNESS=7mm

RECOMMENDED MOUNTING HOLE (建議架設孔)

					DIMENSIONS ARE IN MILLIMETERS			PART NO.		TITLE		
7	HEX NUT	NOTE 1	NOTE 2	1	HN-16-1228-28	UNLESS OTHERWISE SPECIFIED TOLERANCES 0.5-6 = ±0.2 6-30 = ±0.4 30-120 = ±0.6 120-315 = ±1 315-1000 = ±1.6 1000-2000 = ±2.4			APPROVED	DATE	BNC FEMALE TO FEMALE BULKHEAD ADAPTOR	
6	LOCK WASHER	NOTE 1	NOTE 2	1	LW-13-16-05				CHECKED	DATE		
5	GASKET	RUBBER	RED	1	GS-122-160-15				DRAWN	DATE		
4	CONTACT PIN	NOTE 3	NOTE 4	1	900-7470-4				04-15-'10		DRAWING NO.	900-7471A1-75
3	INSULATOR	NOTE 5	NATURAL	2	900-7470-3T-75				04-15-'10		FILE NO.	R:\D\G\DWG\900\7471A1\75-1
2	BODY	NOTE 1	NOTE 2	2	900-6000-2	04-15-'10						
1	HOUSING	NOTE 1	NOTE 2	1	900-7470-1	04-15-'10						
NO.	DESCRIPTION	MATERIAL	FINISH	Q'TY	DRAWING NO.	SCALE	2.5/1	ISSUE	A			

1 2 3 4 5 6 7 8