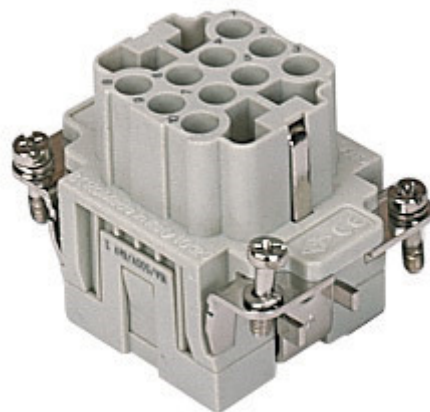


ITEM CODE


CQEF 10
 Industria Lombarda
 Materiale Elettrico

Brief description: female insert, 10 poles + PE, crimp connections, 16A, 500V, 6kV, 3, size "44.27", CLASS insert series



TECHNICAL DETAILS

Product description

Model	Female insert
Version	Crimp connections
Series	CQE
Product type	For female contacts 16A
Family	CLASS inserts, standard version
Size	Size "44.27"
N° of poles	10 poles + 
Technical data	
Current	16 A (A.C. and D.C.)
Tension (V)	500 V
Sustained impulse voltage	6kV
Pollution degree	3
Operating temperature range (min, max)	-40°C ... +125°C
Plugging cycles	≥ 500
IP degree of protection	IP20 without enclosure; IP65/IP66/IP67/IP68 with enclosure

Other technical details

Characteristics according to EN61984	16A 500V 6kV 3; 16A 830V 8kV 2
Insulation resistance	≥ 10 GΩ
Rated voltage according to UL/CSA	600V
UL 94 flammability rating	V-0
Weight (Kg)	0,04

Approvals / Standards

Reference standard	EN 61984 (2001-11)
Quality mark	   , EAC
Conformity	

General ordering information

EAN code	8015747037044
Tariff number	85369085
Country of origin	Made in EU (IT)
ETIM classification	EC000438

Packaging Information

Packaging length (mm)	210,00
Packaging height (mm)	130,00
Packaging width (mm)	240,00
Packaging weight (Kg)	2,52
Packaging volume (dm3)	6,55
Packaging description	Carton box
Packaging quantity (Pcs)	60
Packaging EAN code	8015747208772
Sub-packaging weight (Kg)	0,42
Sub-packaging description	Carton
Sub-packaging quantity (Pcs)	10
Sub-packaging EAN code	8015747037051

In order to download a file, right click on a button and select "Save As...":

NOTES

CQEF/M 10 inserts:

- characteristics according to EN 61984:

(16A 500V 6kV 3)

(16A 830V) 8kV 2)

- rated voltage according to UL/CSA: 600V

- insulation resistance: > 10 GOhm

- ambient temperature limit: -40 °C ... +125 °C

- are made of self-extinguishing thermoplastic resin

UL 94 V0

- mechanical life: > 500 cycles

- contact resistance: < 1 mOhm

- for contact crimping instructions, please see the crimping tool section (16A contacts, CCF, CCM and CC...AN series) .

- enclosures: size "44.27":

C-TYPE IP65/IP66

C7 IP67 stainless steel lever

V-TYPE IP65/IP66

stainless steel lever

T-TYPE IP65 insulating

JEI zinc-plated steel lever

BIG hoods

W-TYPE aggressive environments

EMC

central lever

IP68

panel supports: page:COB
