

# MAH511

# STÄUBLI



**MLB1,5-R**  
65.3300-\*



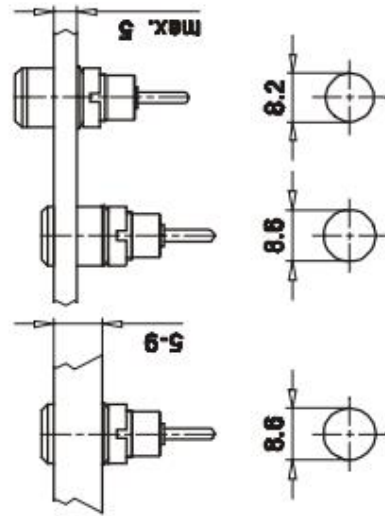
**SLB2-R**  
65.9194-\*



**SLB2-F2,8**  
65.9098-\*

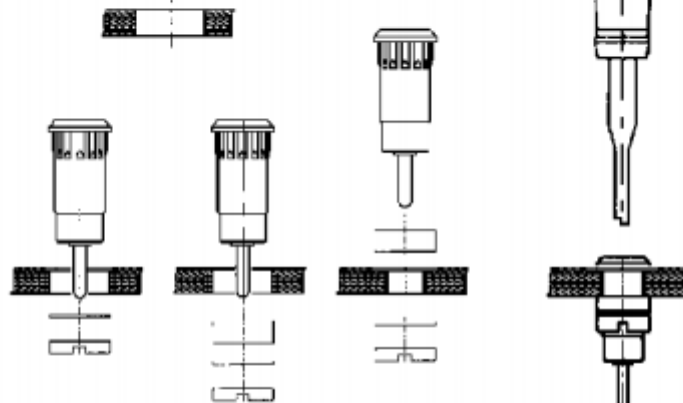
Typ/Type  
Best.-Nr.  
Order No.  
No. de Cde

- \* Farbcode gemäss Katalog
- \* Colour code see catalogue
- \* Code couleurs voir catalogue



**MLB1,5-R**  
**SLB2-R**  
**SLB2-F2,8**

**SS2-S**  
25.0023



Anzugsdrehmoment  
Tightening torque  
Couple de serrage:  
≤ 30 Ncm

**SS4**  
25.0021