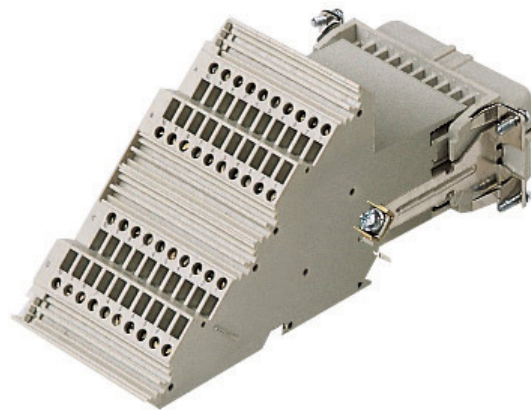


ITEM CODE


CTF 40 R
 Industria Lombarda
 Materiale Elettrico


Brief description: female insert, 40 poles + PE, with terminal block, screw terminal connection, 10A, 250V, 4kV, 3, silver plated, size "57.27" only bulkhead mounted housing, CLASS insert series



TECHNICAL DETAILS

Product description

| | |
|----------------------------------|--|
| Model | Female insert |
| Version | With terminal block, screw terminal connection |
| Series | CT |
| Product type | With female contacts |
| Variant | Right side mounting |
| Family | CLASS inserts, standard version |
| Size | Size "77.27" only bulkhead mounted housing |
| N° of poles | 40 poles +  |
| Technical data | |
| Current | 10 A (A.C. and D.C.) |
| Tension (V) | 250 V |
| Sustained impulse voltage | 4kV |
| Pollution degree | 3 |
| Conduct section | 0,75 mm ² - 2,50 mm ² |

| | |
|--|---|
| Dimension Awg | 18 - 14 |
| Operating temperature range (min, max) | -40°C ... +125°C |
| Contacts material | Brass |
| Contact type | Silver plated |
| Plugging cycles | ≥ 500 |
| IP degree of protection | IP20 without enclosure, IP65, IP66, IP67 and IP69K with enclosure |
| Connection type PE | Screw |
| Stripping length PE connection | 7 mm |
| Wire cross section PE | 0,75 - 2,5 mm ² ; AWG 18 - 14 |
| Tightening torque for PE connection (screwdriver) | M4: 1,2 Nm, 10,6 lb.in (Ph2 or 1,0x5,5mm) |
| Other technical details | |
| Characteristics according to EN61984 | 10A 250V 4kV 3; 10A 230/400V 4kV 2 |
| Insulation resistance | ≥ 10 GΩ |
| Contact resistance | ≤ 4 mΩ |
| Rated voltage according to UL/CSA | 600V |
| UL 94 flammability rating | V-0 |
| Blade size for main contact | 12 mm |
| Torque for main contact (screwdriver) | M2,5: 0.4 Nm; 3.5 lb.in (0,5 x 3mm) |
| Tightening torque for fixing screws (screwdriver) | M3: 0.5 Nm; 4.4 lb.in (Ph1 or 0.8x4 mm) |
| Weight (Kg) | 0,38 |
| Approvals / Standards | |
| Reference standard | EN 61984 (2001-11) |
| Quality mark |  , EAC |
| Conformity |  |
| General ordering information | |
| EAN code | 8015747040983 |
| Tariff number | 85369085 |
| Country of origin | Made in EU (IT) |
| ETIM classification | EC000438 |
| Packaging Information | |

| | |
|-------------------------------------|---------------|
| Sub-packaging length (mm) | 145,00 |
| Sub-packaging height (mm) | 89,00 |
| Sub-packaging width (mm) | 90,00 |
| Sub-packaging weight (Kg) | 0,38 |
| Sub-packaging volume (dm3) | 1,16 |
| Sub-packaging description | Carton Box |
| Sub-packaging quantity (Pcs) | 1 |
| Sub-packaging EAN code | 8015747040990 |

In order to download a file, right click on a button and select "Save As...":

NOTES

CT ... : for non-prepared conductors

