

Part number
CR CP



Brief description:

coding pins for CD 07 and CD 08 inserts



Product description

Series	multipole inserts accessories
Product type	coding pins
Style	for CD and CDD inserts
Family	accessories for multipole connectors

Further technical details

Weight	0,10 g
---------------	--------

General ordering information

EAN13 code	8015747094337
Tariff number	85369095

Packaging Information

Sub-packaging description	Plastic bag
Sub-packaging quantity	100 Pcs
Sub-packaging EAN barcode	8015747094344

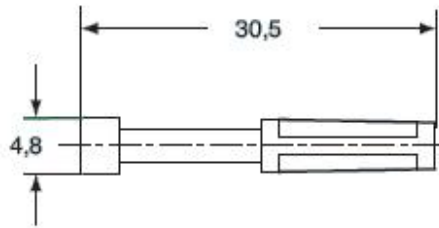
Part number

CR CP

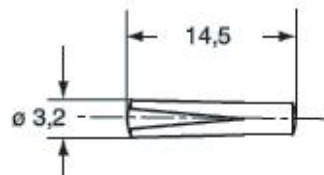


Catalogue drawings

CR CPQ



CR CP



Notes

Code pins

Each series of connector inserts is made in such a way as to make incorrect coupling between inserts of different series impossible. When a number of identical connectors with different functions are mounted closely together these must be selected in such a way as to prevent the coupling of a mobile part on a non-corresponding fixed part and consequent damage and breakdown.

Within this scope, special coding pins have been manufactured in order to restrict or avoid mating identical multiple connectors. By combining multiple coding pins, a high number of selected matings can be produced.
