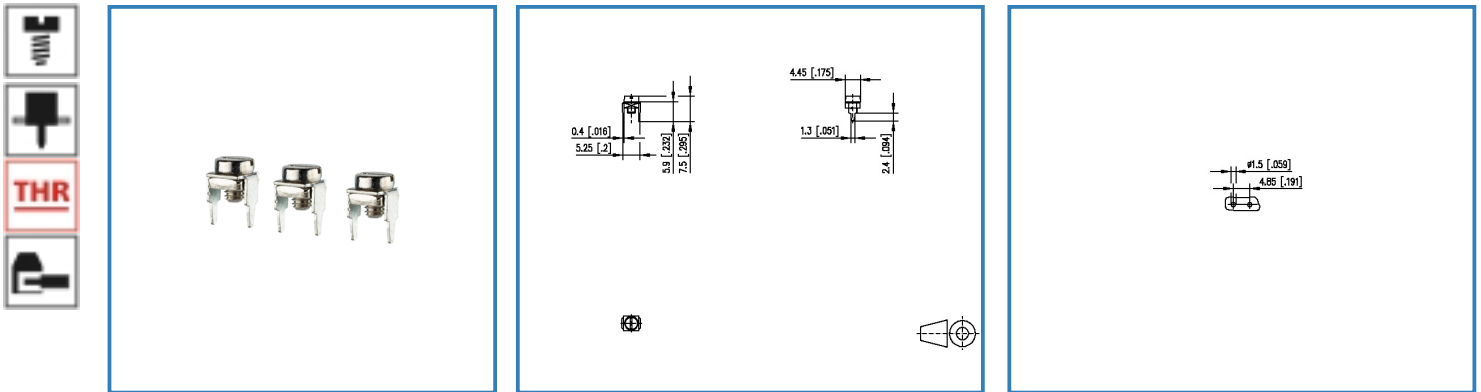


Data Sheet

Type 750122

Illustration



see enlarged drawing at the end of the document

Product specification

- screw type terminal block, THR solderable
- direction of connection 90°

© 2017 METZ CONNECT - Technische Änderungen vorbehalten! Subject to modifications! Sous réserve de modifications techniques!



Data Sheet

Type 750122

Technical Data

General Data

Tightening torque SEV	0.4 Nm
Solder pin length	2.4 mm
min. number of poles	1
max. number of poles	1
protection category	IP 00

Connection data

Rated wiring solid wire	0.05 - 0.52 mm ² / AWG 30 - 20
Rated wiring stranded wire	0.05 - 0.52 mm ² / AWG 30 - 20

Approvals

0.05 - 0.52 mm ²	AWG 30 - 20 /
-----------------------------	---------------

Material

contact material	CuSn
contact surface	Sn
terminal body material	CuZn
terminal body surface	Ni
screw surface	Ni
screw thread	M2.5

General

solderability	Acc. to IPC/JEDEC J-STD-020D-MSL 1
Tolerance	ISO 2768 -mH

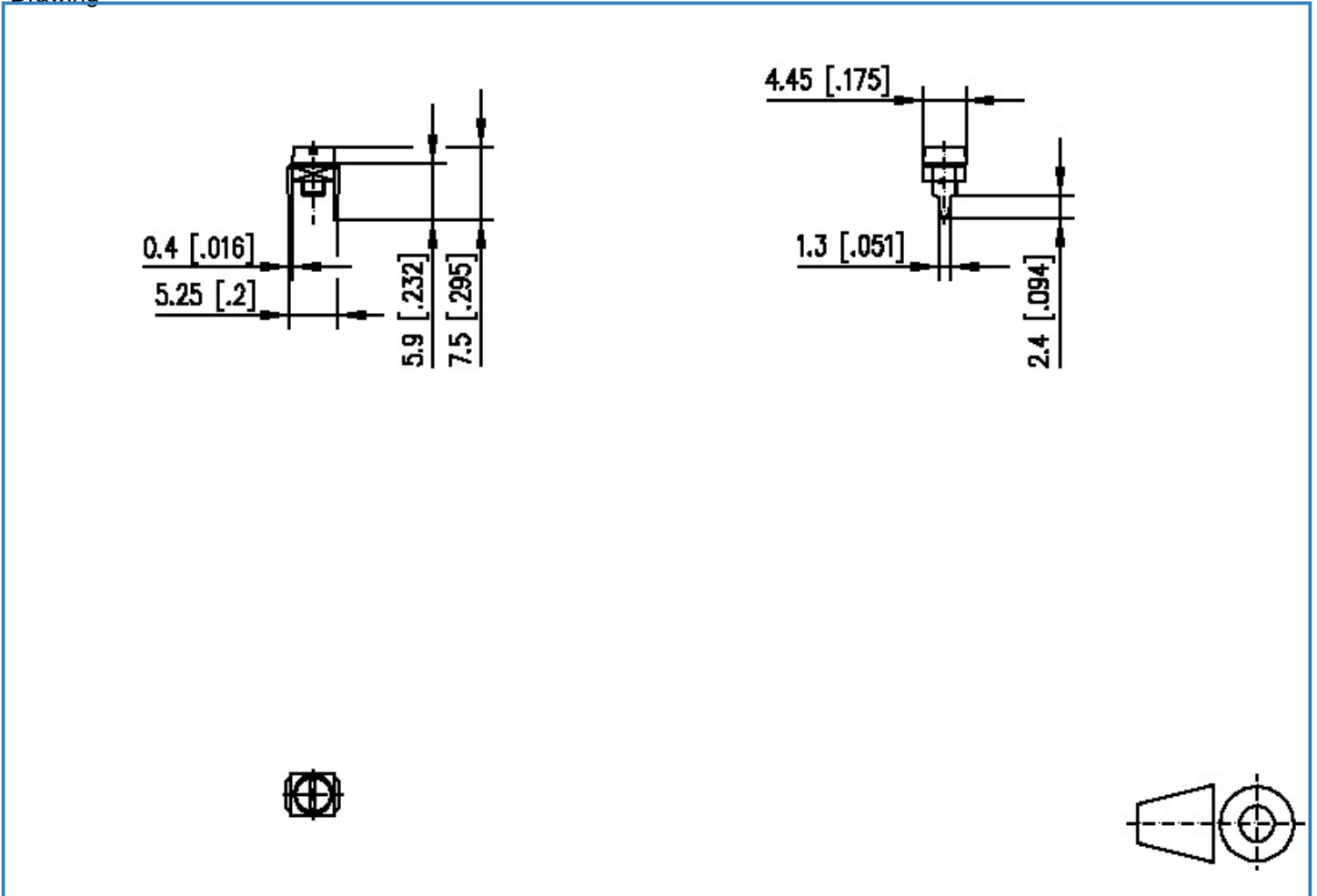


Data Sheet

Type 750122

Illustration

Drawing



Data Sheet

Type 750122

Page 4/4

P/N

750122

2018/02/01

PCB Layout

