

Data Sheet

PT113xxVBBN

Page 1/5

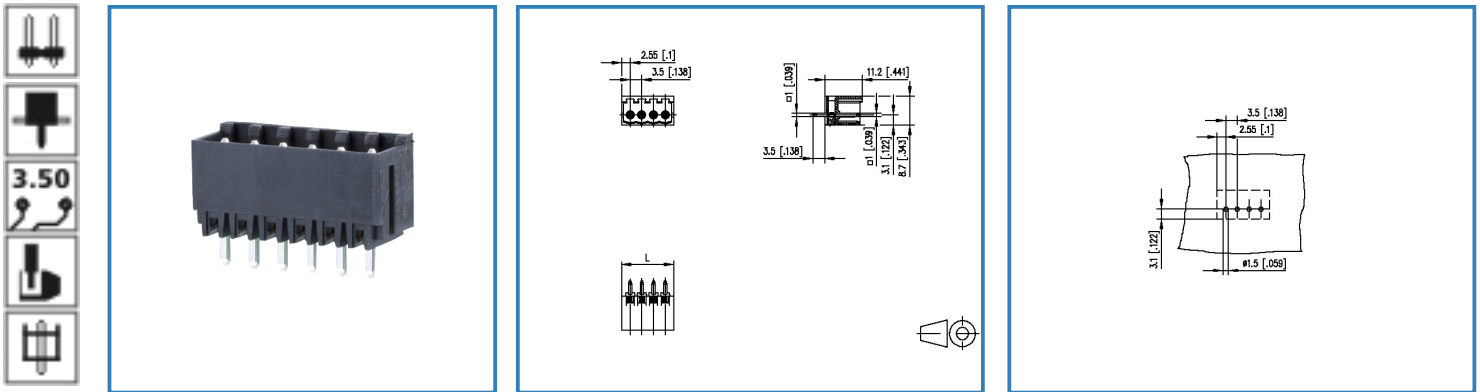
P/N

311831xx

xx=number of poles

2018/02/02

Illustration



see enlarged drawing at the end of the document

Product specification

- pin header, solderable
- centerline 3.50 mm, direction of connection vertical 0°
- closed ends
- color black
- codeable

© 2017 METZ CONNECT - Technische Änderungen vorbehalten! Subject to modifications! Sous réserve de modifications techniques!



Data Sheet



PT113xxVBBN

Technical Data

General Data

| | | | |
|---------------------------|---------|---------|---------|
| Solder pin length | 3.5 mm | | |
| min. number of poles | 2 | | |
| max. number of poles | 18 | | |
| Insulating material class | CTI 600 | | |
| clearance/creepage dist. | 2.5 mm | | |
| protection category | IP 00 | | |
| Overvoltage category | III | III | II |
| Pollution degree | 3 | 2 | 2 |
| Rated voltage | 200.0 V | 500.0 V | 500.0 V |
| Rated test voltage | 2.5 kV | 2.5 kV | 2.5 kV |

Approvals

| | |
|--|----------------------------|
|  V / A | 300 / 10 |
|  | 6 A / 125 V / 2.5 kV / 3 / |

Material

| | |
|-----------------------------|-------------------------------|
| insulating material | PA66 |
| flammability class | V0 |
| Glow-Wire Flammability GWFI | 960 °C acc. to IEC 60695-2-12 |
| Glow-Wire Flammability GWIT | 775 °C acc. to IEC 60695-2-13 |
| contact pin material | CuFe |
| contact pin surface | Ni + Ag |

Climatic properties

| | |
|-------------------------|--------|
| upper limit temperature | 105 °C |
| lower limit temperature | -40 °C |

General

| | |
|---------------|-------------------------------------|
| solderability | Acc. to JEDEC JESD22-B102E 245°C/5s |
| Tolerance | ISO 2768 -mH |

© 2017 METZ CONNECT - Technische Änderungen vorbehalten! Subject to modifications! Sous réserve de modifications techniques!



Data Sheet

PT113xxVBBN

Page 3/5

P/N

311831xx

xx=number of poles

2018/02/02

Matching Part to

| P/N | Product name |
|--------|---------------------|
| 311691 | RP013xxVBWN Typ 169 |

Accessories

| P/N | Product name |
|-------------|--------------|
| 720243-01-3 | 720243 |
| 720243-02-4 | 720243 |

© 2017 METZ CONNECT - Technische Änderungen vorbehalten! Subject to modifications! Sous réserve de modifications techniques!

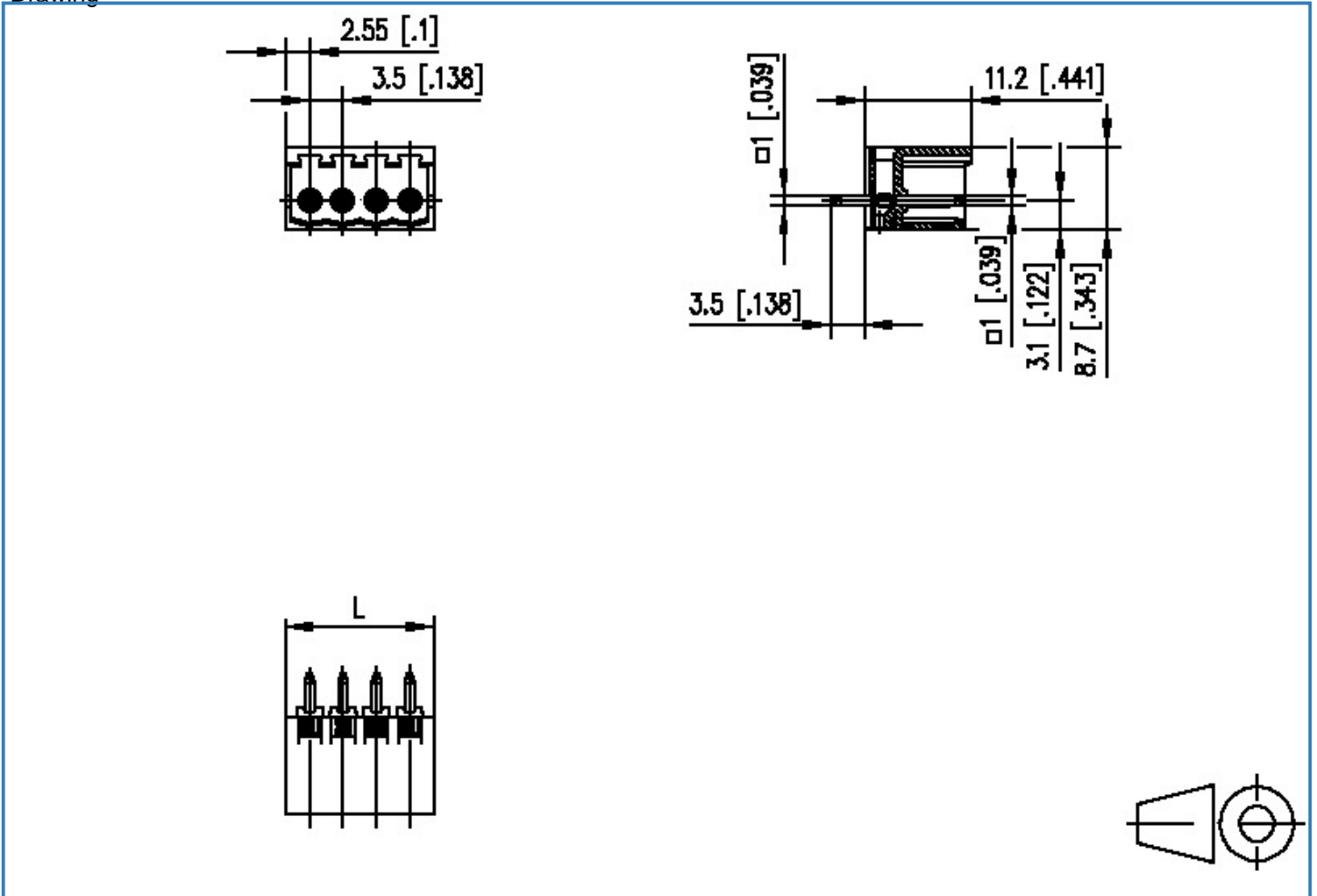


Data Sheet

PT113xxVBBN

Illustration

Drawing



$$L = (\text{pole size} - 1) \times \text{centerline} + 5.1 [0.201]$$

Data Sheet

PT113xxVBBN

Page 5/5

P/N

311831xx

xx=number of poles

2018/02/02

PCB Layout

