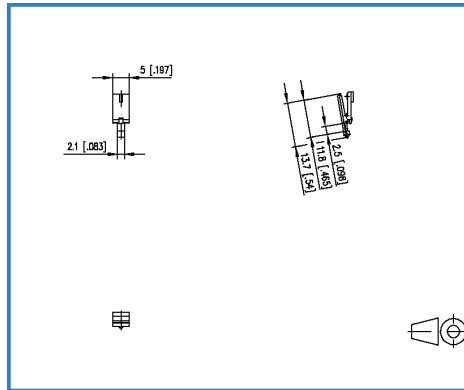


# Data Sheet

## 720158

Page 1/4  
P/N  
720158-02-2  
2018/02/01

### Illustration



see enlarged drawing at the end of the document

### Product specification

- The mounting flange is inserted into the groove in the side of the terminal block and secured to the printed circuit board by being press fit into the hole in the printed circuit board
- Mounting flanges for left and right side are necessary for mounting.
- Variants: 720158-01-2 black for pc board 1.00 mm / 0.039 inches, 720158-02-2 black for pc board 1.50 mm / 0.059 inches

© 2017 METZ CONNECT - Technische Änderungen vorbehalten! Subject to modifications! Sous réserve de modifications techniques!



# Data Sheet

## 720158

Page 2/4

P/N

720158-02-2

2018/02/01

### Technical Data

#### Material

insulating material	PA66
Color	black



# Data Sheet

## 720158

Page 3/4  
P/N  
720158-02-2  
2018/02/01

### Accessories to

P/N	-5
311651	RP023xxHBNF Typ 165
311652 (on request)	RP02JxxHBNF Typ 165
311661	RP023xxHBWC Typ 166
311662 (on request)	RP02JxxHBWC Typ 166



# Data Sheet

## 720158

Page 4/4  
P/N  
720158-02-2  
2018/02/01

### Illustration

#### Drawing

