

Part number
CX 03 4F



Brief description:

female insert, 3 poles, crimp connections, 40A 690V, 6kV, 3, 1 module, modular units series MIXO

Product description

Model	female insert
Version	Crimp connection
Product type	for female contacts 40A
Family	MIXO series, customizable inserts
Size	1 module
N. of poles	3 poles

Technical data

Current	40 A (A.C. and D.C.)
Voltage	400 - 690 V
Rated impulse withstand voltage	6kV
Pollution degree	3
Operating temperature range (min, max)	-40°C ... +125°C
IP degree of protection	IP20 without enclosure, IP65/IP66/IP68/IP69 with enclosure

Further technical details

Characteristics according to EN 61984	40A 400/690V 6kV 3
Insulation resistance	≥ 10 GΩ
Rated voltage according to UL/CSA	600V
UL 94 flammability rating	V-0
Weight	11,70 g

Approvals / Standards

Reference standard	EN 61984:2009-06
Quality mark	 , EAC
Conformity	CQC, CE

General ordering information

EAN13 code	8015747041706
Tariff number	85369095

Packaging Information

Packaging length	180,00 mm
Packaging height	130,00 mm
Packaging width	150,00 mm
Packaging weight	0,76 kg
Packaging volume	3,51 dm ³
Packaging description	Carton box
Packaging quantity	60 Pcs
Packaging EAN code	8015747221177
Sub-packaging length	35,00 mm
Sub-packaging height	40,00 mm
Sub-packaging width	155,00 mm
Sub-packaging weight	0,13 kg
Sub-packaging volume	0,22 dm ³
Sub-packaging description	Carton tray
Sub-packaging quantity	10 Pcs
Sub-packaging EAN barcode	8015747041713

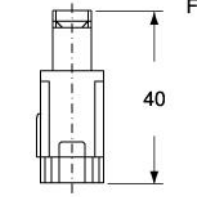
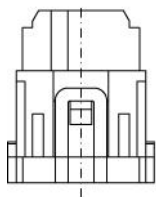
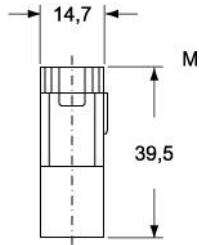
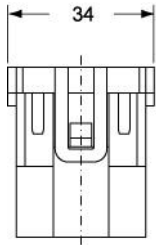
Part number

CX 03 4F

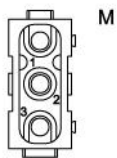
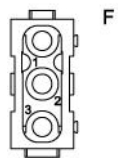


Catalogue drawings

CX 03 4M

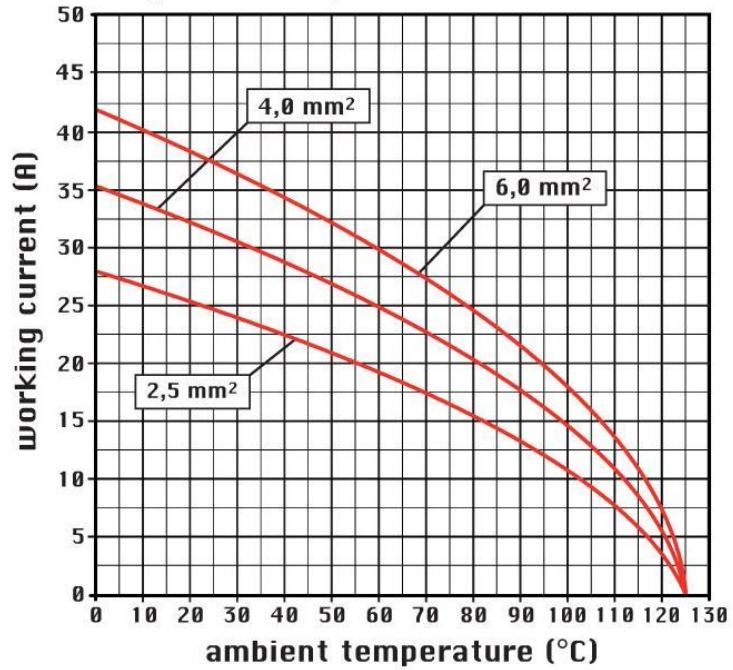


CX 03 4F



Catalogue drawings

diagram CX 03 poles



Notes

CX 03 4 inserts:

- characteristics according to EN 61984:
(40A 400/690V 6kV 3)
- footprint 1 module
- for maximum current load, see the insert load curve section
- for contact crimping instructions, please see the crimping tool section (40A contacts, CXF and CXM series)

the modular inserts must be installed in suitable frames which in turn are installed in traditional housings or COB panel support